

Flourescent Magnifying Lights Square

Biomedical Departments, CSSD and Laboratories all use magnifying lights. Simple but invaluable devices that take the stress out of reading small numbers or close up inspection of equipment and instruments.

This light features a positionable arm supporting both a light source and magnifying lens, providing excellent visibility for a particular task. Also features a compact fluorescent lamp which provides low operating temperatures, optimum energy efficiency and long life.

Features

- Shadowless light source
- Energy saving
- Large 3 diopter rectangular lens
- G clamp base supplied with fitting

Exclusive Features

- Arm Reach: 960mm
- Switchable light settings 9w, 18w and 27w
- Lens mounted on swivel for precision focusing
- Lens Measurement: 160 x 105mm
- Light Source: Max 27watt
- Compact fluorescent lamps included (3x) G23 2 PIN 9watt PL
- Approval number - NSW20452
- Removable lens cover supplied



MLS



Removable lens cover supplied

*Spare Base Fittings Pg. 2

Code	Description
MLS	MAGNIFYING LIGHT SQUARE WITH PLAIN G-CLAMP
MLSTM	MAGNIFYING LIGHT SQUARE WITH TROLLEY (NOT PICTURED)
MLSWM	MAGNIFYING LIGHT SQUARE WITH WALL MOUNT (NOT PICTURED)

Prepared by: Paragon Medical Pty Ltd trading as LR Instruments ABN 76 133 072 107
 Unit 7/100 New Street (PO Box 458) Ringwood VIC 3134
 Contact Details: P (03) 9870 7066 | F (03) 9870 1638 | E info@lrinstruments.com.au
 File Name: MLS_Magnifying-Light-Square_v2-1



First Prepared: 21/12/14 Eevien Tan
 Release Approval: 21/12/14 Lee Carter
 Version Control: V2.1 Page 1 | 2

Flourescent Magnifying Lights

Spares, Base, and Fittings



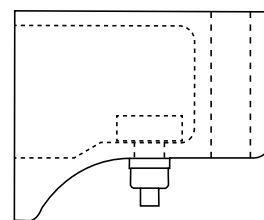
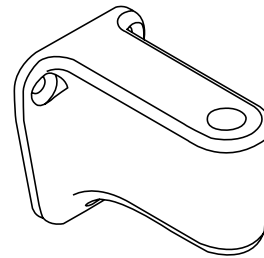
MLWB

Extra heavy duty wall bracket
(white only)



MLSCLAMPLSM-2

Plain G-Clamp for clamping onto horizontal
surfaces only
(white only)



Wall bracket diagram

Code	Description
MLSCLAMPLSM-2	PLAIN G-CLAMP
MLSCLAMPLSM-1	SWIVEL G-CLAMP (NOT PICTURED)
MLWB	WALL BRACKET FOR VERTICAL SURFACES
MLSPIGOT	SPIGOT TO SUIT MAGNIFYING LIGHT (NOT PICTURED)



Prepared by: Paragon Medical Pty Ltd trading as LR Instruments ABN 76 133 072 107
Unit 7/100 New Street (PO Box 458) Ringwood VIC 3134
Contact Details: P (03) 9870 7066 | F (03) 9870 1638 | E info@lrinstruments.com.au
File Name: MLS_Magnifying-Light-Square_v2-1

First Prepared: 21/12/14 Eevien Tan
Release Approval: 21/12/14 Lee Carter
Version Control: V2.1 Page 2 | 2